

## FLOAT AND THERMOSTATIC STEAM TRAPS FLT16

### DESCRIPTION

The FLT16 is a series of float and thermostatic steam traps with integral air vent designed for modulating discharge of condensate, ensuring maximum system heat transfer.

Typical applications include unit heaters, heat exchangers, dryers, jacketed vessels and other applications where continuous discharge is essential.

### MAIN FEATURES

Modulating discharge of condensate at steam temperature.  
Unaffected by sudden or wide load and pressure variations.  
No backing-up with condensate.  
Excellent air discharge through its integrated air vent.

**OPTIONS:** Equalizing (vent) and drain connections.  
SLR – Steam lock release.  
HVV – Hand vent valve.  
BDV – Blowdown valve.  
AFZ – Anti-freeze device.  
VB21M – Vacuum breaker.

**USE:** Saturated and superheated steam.

**AVAILABLE MODELS:** FLT16-4,5 , 10 and 14 – SG iron.

**SIZES:** 1/2" and 3/4"; DN 15 and DN 20.

**CONNECTIONS:** Female threaded ISO 7 Rp or NPT.  
Flanged EN 1092-2 PN 16.

**INSTALLATION:** Inline horizontal or vertical installation.  
See IMI – Installation and maintenance instructions.

**ΔPMX:** FLT16-4,5 – 4,5 bar  
FLT16-10 – 10 bar  
FLT16-14 – 14 bar



#### CE MARKING – GROUP 2 (PED – European Directive)

PN 16	Category
1/2" and 3/4" – DN 15 and 20	SEP

#### BODY LIMITING CONDITIONS \*

ALLOWABLE PRESSURE	RELATED TEMPERATURE
16 bar	100 °C
15,5 bar	150 °C
14,7 bar	200 °C
13,9 bar	250 °C

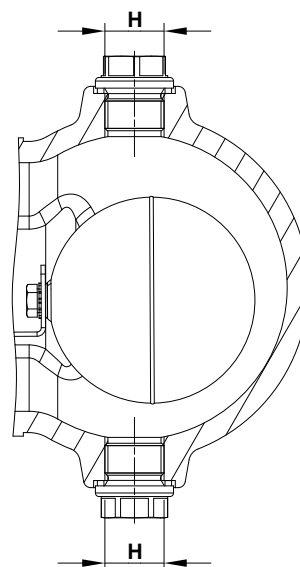
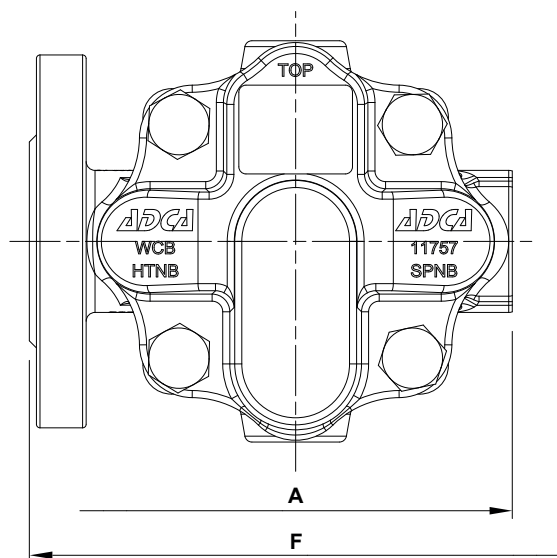
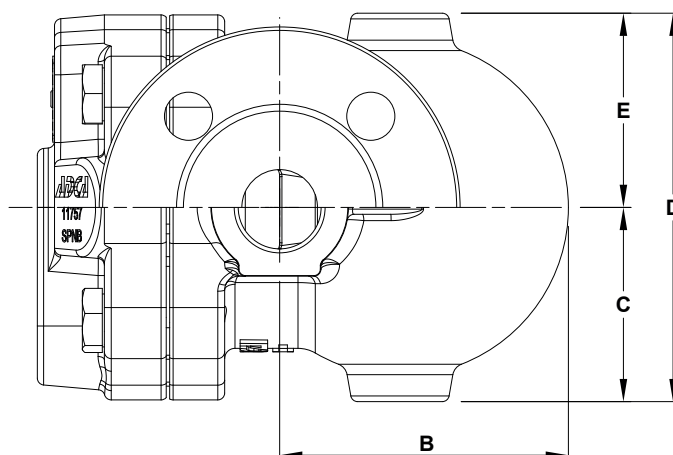
PMO – Maximum operating pressure: 14 bar.

TMO – Maximum operating temperature: 198 °C.

\* According to EN 1092-2:2018.

**FLOW RATE CAPACITY (kg/h)**

MODEL	SIZE	DIFFERENTIAL PRESSURE (bar)												
		0,5	1	1,5	2	3	4,5	6	7	8	9	10	12	14
FLT16-4,5	1/2" and 3/4" – DN 15 and 20	200	280	320	360	400	495	–	–	–	–	–	–	–
FLT16-10	1/2" and 3/4" – DN 15 and 20	110	140	175	190	230	280	300	330	350	390	405	–	–
FLT16-14	1/2" and 3/4" – DN 15 and 20	70	100	120	140	155	190	210	220	225	230	260	280	300

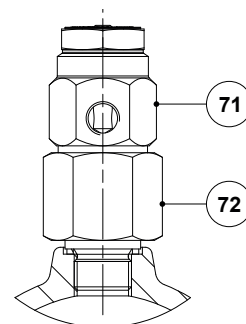
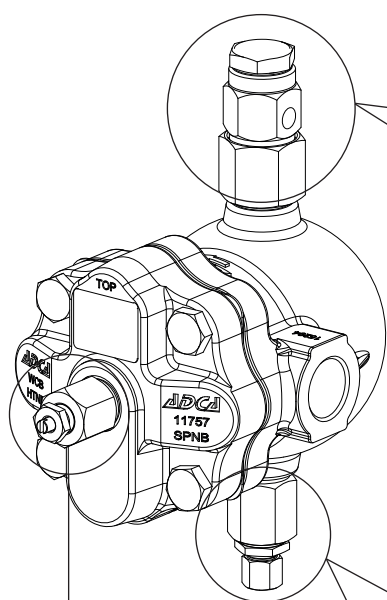
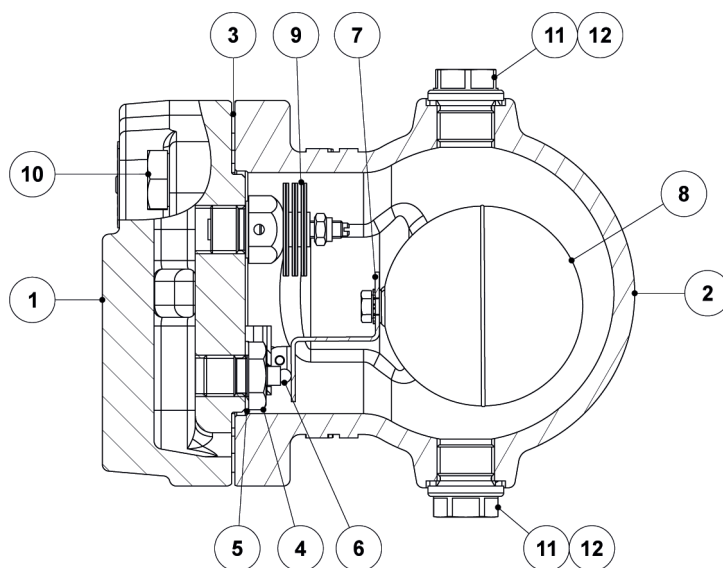


**DIMENSIONS (mm)**

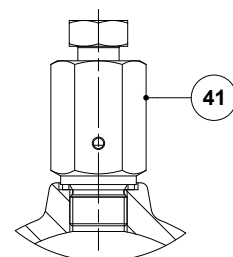
SIZE	THREADED							PN 16		
	A	B	C	D	E	H *	WEIGHT (kg)	E	F	WEIGHT (kg)
1/2" – DN 15	122	84	56,5	113	56,5	3/8"	4,2	56,5	150	4,9
3/4" – DN 20	122	84	56,5	113	56,5	3/8"	4,2	56,5	150	5,3

\* As standard, in versions with EN flanges or female ISO 7 Rp threads, these connections are female threaded ISO 228. In versions with female NPT threads, these connections are female threaded NPT.

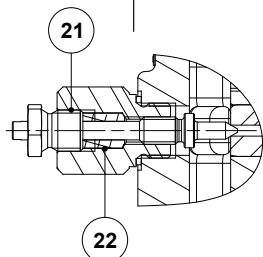
## MATERIALS



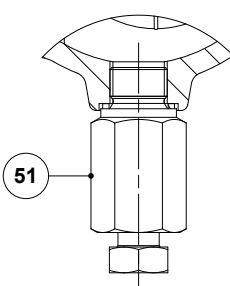
Optional vacuum breaker  
(VB21M)



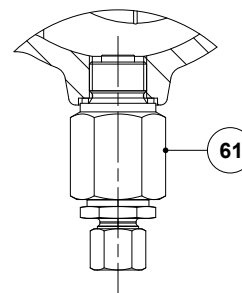
Optional hand vent valve  
(HVV)



Optional steam lock release  
(SLR)



Optional blowdown valve (BDV);  
Manual



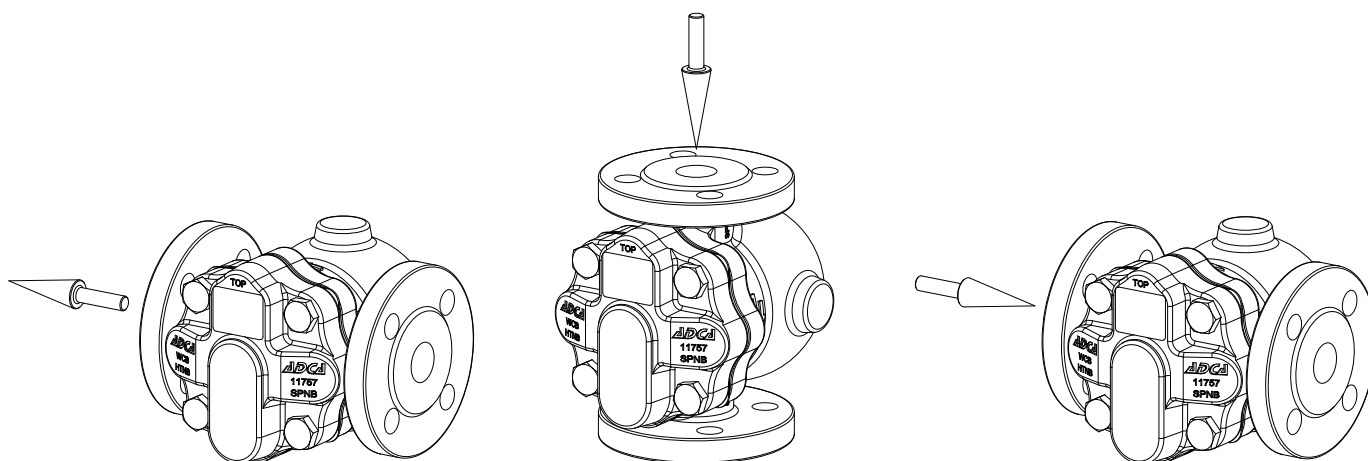
Optional anti-freeze device (AFZ);  
Automatic

**MATERIALS**

POS. N°	DESIGNATION	MATERIAL
1	Body	GJS-400-15 / 0.7040
2	Cover	GJS-400-15 / 0.7040
3	* Gasket	Stainless steel / Graphite
4	* Seat	AISI 410 / 1.4006
5	* Gasket	AISI 304 / 1.4301
6	* Valve	AISI 440C / 1.4125
7	* Lever	AISI 304 / 1.4301
8	* Float	AISI 304 / 1.4301
9	* Automatic air vent	Stainless steel; Bimetal
10	Bolt	Zinc plated steel
11	Plug	AISI 316L / 1.4404
12	** Gasket	Copper; AISI 304 / 1.4301
21	Steam Lock Release	AISI 420 / 1.4021; AISI 316L / 1.4404
22	Packing	Graphite
41	Hand vent valve	AISI 303 / 1.4305; AISI 316L / 1.4404
51	Blowdown valve	AISI 303 / 1.4305; AISI 316L / 1.4404
61	Anti-freeze device	AISI 303 / 1.4305; AISI 316L / 1.4404
71	Vacuum breaker	AISI 303 / 1.4305
72	Connector	AISI 316L / 1.4404

\* Available spare parts; \*\* Not applicable in NPT version.

**FLOW DIRECTION**



*IR - Horizontal from right to left*

*IT - Vertical from top to bottom*

*IL - Horizontal from left to right*

ORDERING CODES FLT16

Model	A16	2	V	XX	X	IR	A	15	
FLT16	A16								
<b>Maximum allowable differential pressure (<math>\Delta</math>PMX)</b>									
4,5 bar		2							
10 bar		3							
14 bar		4							
<b>Automatic air vent</b>									
Bimetallic air vent (standard)			V						
None			X						
<b>Cover connections</b>									
None				XX					
3/8" threaded connections on top and bottom, closed with plugs (mandatory if any options are considered) *				10					
<b>Options</b>									
If any, these have specific separate ordering codes, please refer to the appropriate documentation.									
<b>SLR - Steam lock release</b>									
None					X				
With steam lock release assembled					S				
<b>Flow direction</b>									
Inline horizontal from right to left (standard)						IR			
Inline horizontal from left to right						IL			
Inline vertical from top to bottom						IT			
<b>Pipe connections</b>									
Female threaded ISO 7 Rp							A		
Female threaded NPT							C		
Flanged EN 1092-2 PN 16							L		
<b>Size</b>									
1/2" or DN 15								15	
3/4" or DN 20								20	
<b>Special construction / Additional options</b>									
A full description must to be provided and validated in case of a non-standard construction.									E

\* Not recommended with vertical flow direction, as the connections will be in the horizontal plane.